



Wireless Site Assessment

Site surveys ensure a successful and efficient wireless network deployment. NETSCOUT's Wireless Site Assessment service helps organizations looking to deploy a WLAN and those currently using wireless technologies to assess the environment for optimal wireless network design, management and potential security concerns.

New Installations

Determine capital investment and obtain the number and preferred location of access points for the best coverage before the initial deployment

Existing Installations

Verify the number of access points required versus the number actually deployed and validate their location to ensure optimal performance for all end users

Ongoing Optimization

Ensure optimal performance by conducting periodic site surveys in order to account for changes in the WLAN environment

OVERVIEW

- AutoCAD drawings identifying recommended AP installation locations
- Site survey report containing individual floor plans that indicate AP location recommendations
- Heat map showing RF coverage of the entire floor
- Spectrum analysis report including the locations shown graphically on a floor plan of possible interferers such as microwave ovens and cordless phones
- Bill of materials including all access point antennae, power injectors, cables and grounding needed for complete installation
- Test methodology and tools

NETSCOUT's site assessment service uses automated software and industry best practices to locate and map authorized and unauthorized wireless access points, review any corporate access point deployment, analyze the environment for interference and design and plan a WLAN network.

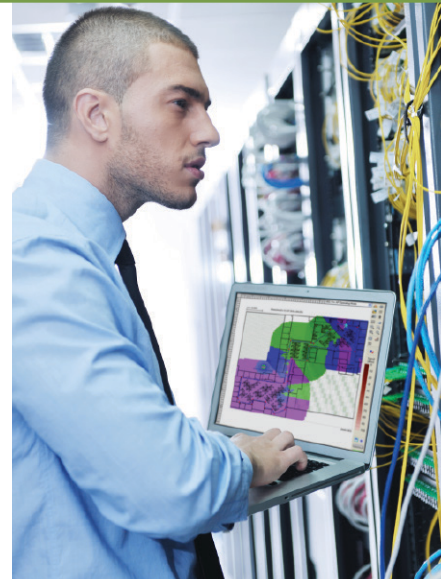
Why Do I Need a Site Survey?

RF signals are very unpredictable. If an access point is placed in an open environment with no obstacles, the signals usually maintain an omni-directional pattern. However, when obstacles and walls with different characteristics are introduced, the RF signals are disrupted and access point coverage varies based on location.

Site surveys determine signal coverage, throughput requirements, interfering sources, dead spots, potential roaming behavior, etc. and helps determine:

- How many access points are needed for the best wireless coverage
- Where to deploy access points
- How to configure each access point to ensure optimal coverage for all end users

Without site surveys it would be difficult to determine the capital investment needed to deploy the wireless network in a timely and cost efficient manner.



Site Assessment Information

What will NETSCOUT do on-site?

- Gather requirements – an initial planning session is held to review preliminary design requirements, confirm your objectives and goals for assessment, identify and confirm the in-scope and out-of-scope areas for design including, in-scope areas that have AP mounting restrictions and review floor plans and bring attention to any potential trouble areas
- Perform the survey – indoor and outdoor surveys, active surveys enabling real-world measurements, spectrum analysis and Voice over Wi-Fi (VoFi) surveys if needed
- Deliver the results – comprehensive and easy-to-understand report and a bill of materials for complete installation

What does the site assessment include?

- Network verification and validation per specifications. Expert recommendation and advice provided in order to achieve desired specifications
- Spectrum Analysis to identify RF interference sources from non-WLAN sources in a single survey
- Visualization of RF energy at any location and identification and display of non-802.11 devices interfering with WLAN
- Voice over Wi-Fi (VoFi) survey. Coverage maps built specifically for voice networks includes call quality, phone roaming zones (roaming stats), channel utilization and voice-readiness validation
- Outdoor surveys

What are NETSCOUT's site assessment offerings?

- Small site assessment – less than 30,000 square feet, only two floors
- Medium site assessment – 30,000-60,000 square feet, only two floors
- Large site assessment – 60,000-100,000 square feet, only two floors
- Outdoor surveys – integration with outdoor wireless environments
- For buildings with more than 100,000 square feet and more than two floors, contact NETSCOUT

Contact your local NETSCOUT representative for scoping and pricing information.

Visit: <http://airmagnet.netscout.com/support/training/>

NETSCOUT

Americas East

310 Littleton Road
Westford, MA 01886-4105
Phone: 978-614-4000
Toll Free: 800-357-7666

Americas West

178 E. Tasman Drive
San Jose, CA 95134
Phone: 408-571-5000

Asia Pacific

17F/B
No. 167 Tun Hwa N. Road
Taipei 105, Taiwan
Phone: +886 2 2717 1999

Europe

One Canada Square
29th floor, Canary Wharf
London E14 5DY, United Kingdom
Phone: +44 207 712 1672

NETSCOUT offers sales, support, and services in over 32 countries.

For more information, please visit
enterprise.netscout.com or
contact NETSCOUT at 800-309-4804
or +1 978-614-4000

© 2016 NETSCOUT SYSTEMS, INC. All rights reserved. NETSCOUT, nGenius, InfiniStream, Sniffer, nGeniusONE, ASI, Adaptive Service Intelligence and the NETSCOUT logo are registered or pending trademarks of NETSCOUT SYSTEMS, INC. and/or its affiliates in the United States and/or other countries ("NETSCOUT"). All other brands and product names and registered and unregistered trademarks are the sole property of their respective owners. Use of this product is subject to the NETSCOUT SYSTEMS, INC. ("NETSCOUT") End User License Agreement that accompanies the product at the time of shipment or, if applicable, the legal agreement executed by and between NETSCOUT and the authorized end user of this product ("Agreement"). NETSCOUT reserves the right, at its sole discretion, to make changes at any time in its technical information, specifications, service, and support programs.